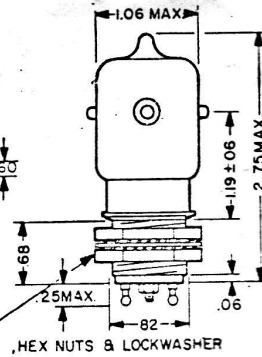
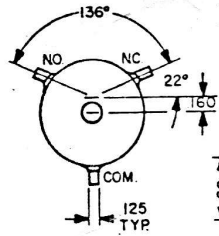
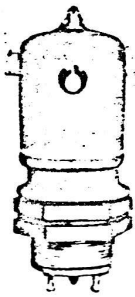


RB1D

All glass vacuum relays utilize hinged-armature contact actuation to achieve high r-f voltage and current performance. High strength sapphire rod provides insulation from ground. The RB1D is mounted by means of a flange which can be bolted to the chassis. Standard terminal connections are Jennings type N300 nickel tabs. Heavy duty connectors available. Flange mounting.

RB1H

Identical to RB1D except coil housing below mounting flange is only .125 inch long.

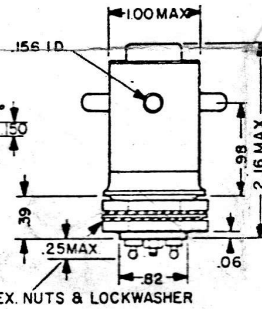
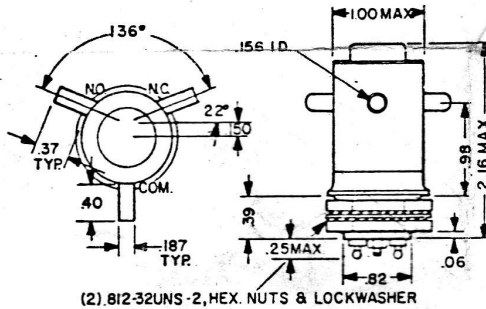
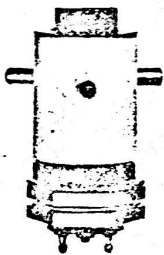


RB1E

Electrically and mechanically the same vacuum relay as all RB1 types. The RB1E has the same dimensions as the RB1D but mounting is accomplished by means of a threaded sleeve on the coil housing.

RB1J

Identical to RB1E except coil housing below mounting flange is only .328 inches.



RJ2B

This relay employs the hinged armature contact actuation common to all Jennings glass vacuum relays. However, the ceramic envelope of RJ2 permits much higher r-f current ratings. It occupies the same space as the RB1 and can be used as a replacement in existing designs. High voltage connections are solder terminals which accept up to #8 gauge wire.

RJ2C

Flange mounting version of RJ2B with 1.62 inch diameter flange. Has three .14 inch diameter slots equally spaced on 1.37 inch bolt circle. Coil housing is .73 inches in diameter. Overall length 2.35 inches.

RELAY TYPE	CONTACT ARRANGEMENT	FORM	PEAK TEST VOLTAGE	RATED OPERATING VOLTAGE			CONTINUOUS CURRENT (CARRY)				CONTACT CAPACITY		CONTACT RESISTANCE	
			DC or 60 Hz (KV Peak)	DC or 60 Hz (KV Peak)	2.5 MHz (KV Peak)	16 MHz (KV Peak)	32 MHz (KV Peak)	DC or 60 Hz (Amps. RMS)	2.5 MHz (Amps. RMS)	16 MHz (Amps. RMS)	32 MHz (Amps. RMS)	Open Contact to Ground (pf)	Between Open Contacts (pf)	(Max. ohms)
RB1D RB1H	SPDT	C	18	12	10	8	5	15	10	6	4	1.0	0.5	.012
RB1E RB1J	SPDT	C	18	12	10	8	5	15	10	6	4	1.0	0.5	.012
RJ2B RJ2C	SPDT	C	15	12	10	8	5	50	22	15	12	1.0	0.7	.012
RD5A RD6A	SPST N.O. SPST N.C.	A B	15	12	10	8	5	15	10	6	4	1.0	0.5	.012
RD5A RD6A	SPST N.O. SPST N.C.	A B	15	12	10	8	5	15	10	6	4	1.0	0.5	.012
RE6B	SPDT	C	30	25	15	12	8	25	13	8	5	2.5	1.0	.010