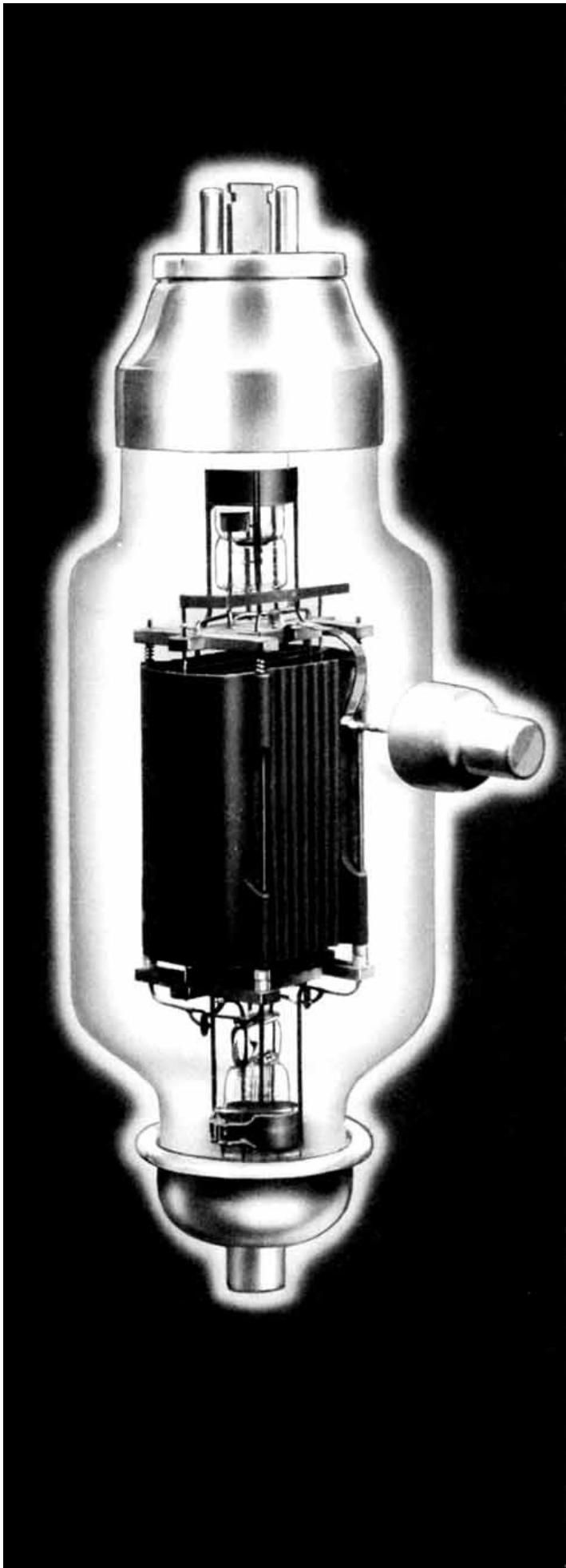


# FEDERAL

## F-132-A TRANSMITTING TUBE



### TECHNICAL DATA

Main Use	Audio Amplifier
Number of Electrodes	3
Filament Voltage	11 volts
Current	13 amperes
Type	Thoriated Tungsten
Available Thermionic Emission	6 amperes
Average Characteristic Values calculated at $E_b = 3000$ , $I_b = 0.200$ ampere, $E_f = 11$ A-C volts.	
Grid Voltage (approximate)	-250 volts
Amplification Factor	10
Mutual Conductance	6250 micromhos
Plate Resistance	1600 ohms
Approximate Direct Inter-electrode Capacitances	
Plate to Grid	15.0 mmf.
Grid to Filament	12.0 mmf.
Plate to Filament	5.5 mmf.
Type of Cooling	Radiation
Type Base	Standard 250 watt and Grid Cap
Type of Mounting	Standard 250 watt and Grid Clip

*The information above and in the following pages by no means represents exact conditions of operation to be imposed for any particular situation. Since tubes are used under many widely different conditions the manufacturer will gladly furnish information regarding characteristics for design purposes.*

*Manufactured by*

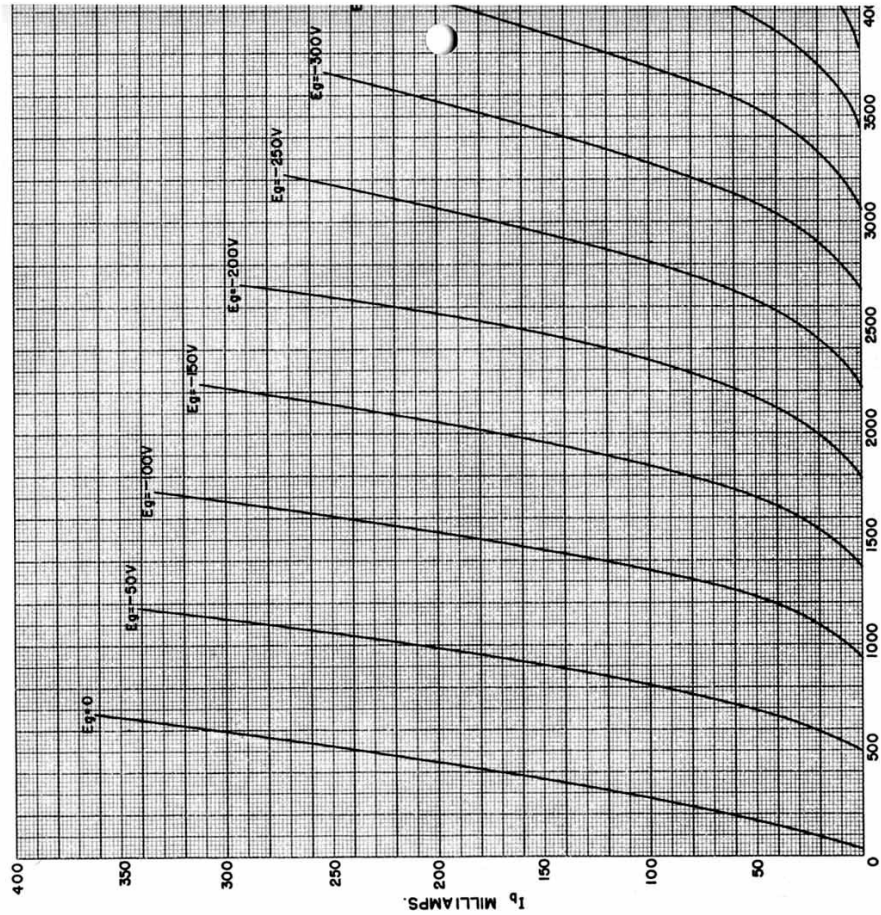
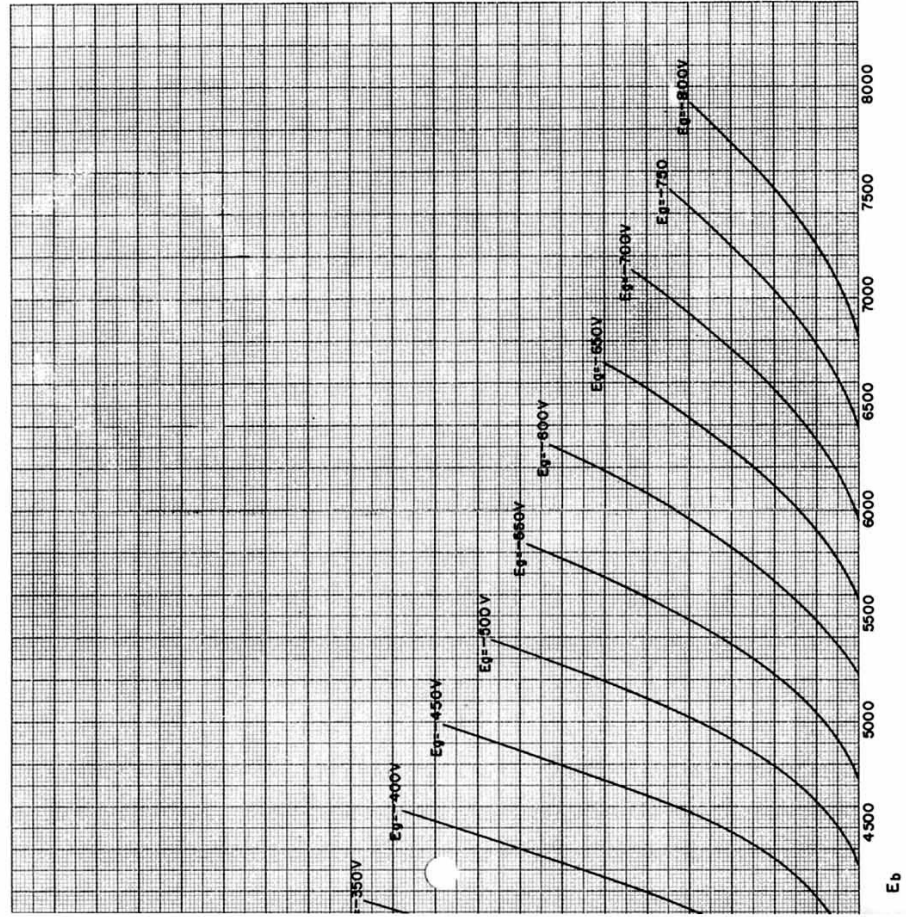
**FEDERAL TELEGRAPH CO., INC.**

*Division of*

**INTERNATIONAL TELEPHONE & RADIO  
MANUFACTURING CORPORATION**

**200 Mt. Pleasant Avenue, Newark, N. J., U. S. A.**

AVERAGE PLATE CHARACTERISTICS



# Maximum Ratings

F-132-A Transmitting Tube

## CLASS A AUDIO AMPLIFIER

D-C Plate Voltage	3500 volts
Maximum Plate Dissipation	600 watts

## CLASS B AUDIO AMPLIFIER

D-C Plate Voltage	3500 volts
Max. Signal D-C Plate Current	0.600 ampere
Max. Signal Plate Input	1800 watts
Plate Dissipation	600 watts

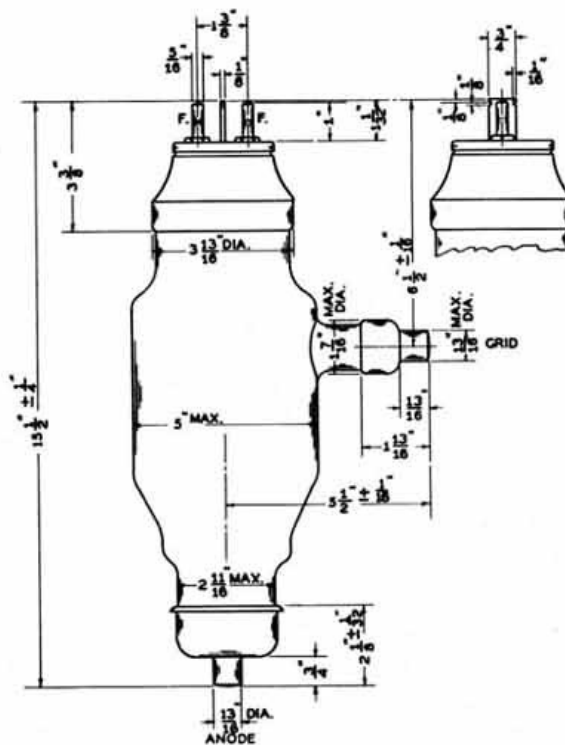
## Typical Operation Data

F-132-A Transmitting Tube

Typical Operation as push pull Class A driver for 2 Type F-125-A tubes.

### ALL VALUES FOR TWO TUBES

D-C Plate Voltage .....	3500	2700
D-C Grid Voltage .....	-300	-225
Zero Signal Plate Current—Amperes ....	.308	.300
Max. Signal Plate Current—Amperes ..	.317	.307
Peak Grid to Grid Signal Voltage .....	590	440
Peak Plate to Plate Output Voltage ..	5700	4000
Effective Plate to Plate Load Impedance .....	40,000	35,000
Output Transformer turns ratio .....	1:1	1:1.3
Total Harmonic Distortion .....	2%	1%



Dimensional  
Data